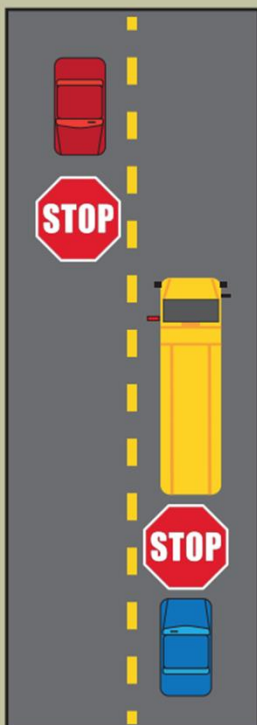


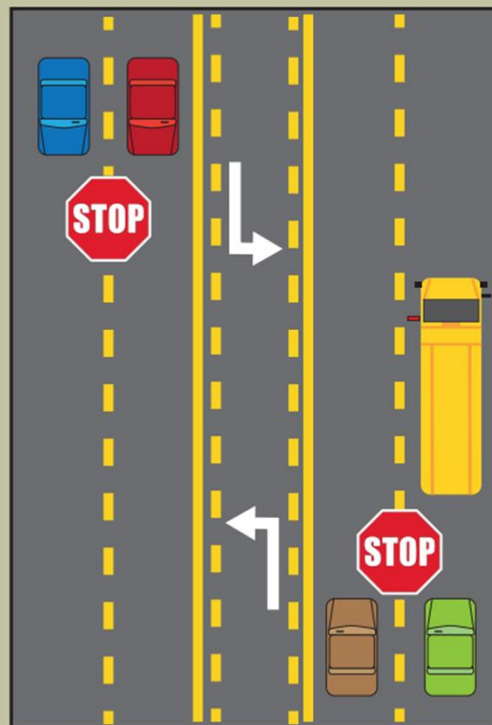
Parents and Community Members,

As most of you know, three siblings were tragically killed near Rochester Indiana when a driver disregarded the stop arm and flashing lights of a school bus that was stopped to pick up the children. Unfortunately, events of this nature continue to occur throughout the country. We need your assistance in helping keep our kids safe. We are asking drivers to please stop when you see the stop arm extended and flashing lights. Randolph Southern bus drivers are reporting when vehicles ignore extended stop arms and flashing lights. The school corporation immediately reports these incidents to law enforcement. Please remember that it is a violation of the law to ignore a school bus that has the stop arm extended out and lights flashing. We want all students to depart and arrive home safely. The Indiana School Bus Stop Law illustrates when drivers must stop. Thank you.

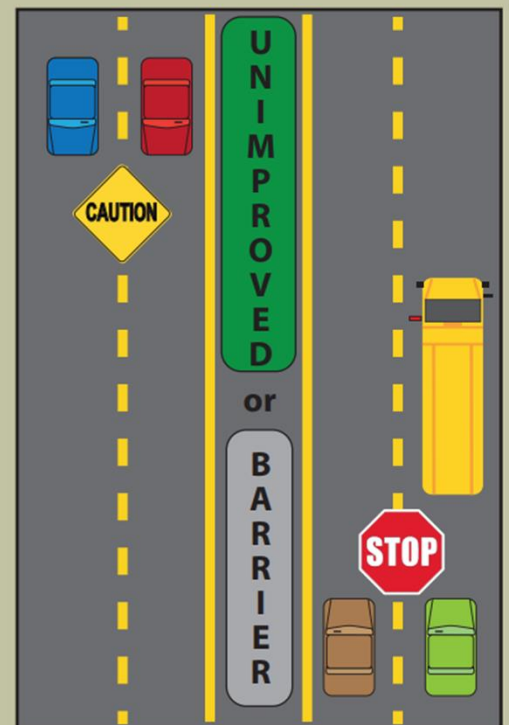
Indiana School Bus Stop Law



TWO-LANE:
Vehicles traveling
in both directions
MUST STOP



MULTI-LANE PAVED ACROSS:
Vehicles traveling
in both directions
MUST STOP



DIVIDED HIGHWAY:
(Unimproved median, physical barrier,
or designed to impede vehicular traffic)
Vehicles behind bus MUST stop.
**Vehicles traveling in the opposite
direction proceed with caution.**